

JCB Flat Socket Barrel Nut

Thread Type: Metric - Coarse

Thread Direction: Right Hand

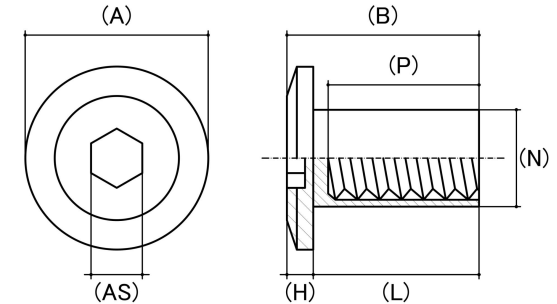
Drive Type: Internal Hex

Material: Carbon Steel

Class Grade: Low Tensile Class 4.6

Finish: Nickel Plated

Corrosion Protection Level: Very Good



*Cad Drawings shown for graphic representation only.**

Size	Thread Pitch (mm)	Thread Type	Overall Nut Height (B) (mm)	Barrel Length (L) (mm)	Head Diameter (A) (mm)		Head Height (H) (mm)		Body Diameter (N) (mm)	Internal Thread Depth (P) (mm)	Driver Bit Size (AS) (mm)	sku (Part Number)
			Nom	Nom	Min	Max	Min	Max	Nom	Nom		
M6	1.00mm	Coarse	14.80	12.10	12.35	12.65	2.50	2.60	7.75	9.90	4	41FC6
M6	1.00mm	Coarse	17.60	15.25	13.05	13.35	2.50	2.60	7.75	13.20	4	41FC615
M8	1.25mm	Coarse	17.60	14.80	15.65	15.95	2.95	3.05	9.85	12.10	5	41FC8

Disclaimer:

Dimensional data and technical information was obtained from publically available sources and not acquired through standard agencies. It has been completed and compiled for reference purposes only; where discrepancies are found they are subject to change without notice. Bolt & Nut Australia makes no warranties or representations regarding the accuracy and validity of the compiled information and data. Contact the relevant standard authorities for accurate and detailed information.

* Cad Drawings may not reflect diameter, thread length or overall length.

© Bolt & Nut Australia Pty Ltd. All rights reserved.

Version: 09 Dec 2024